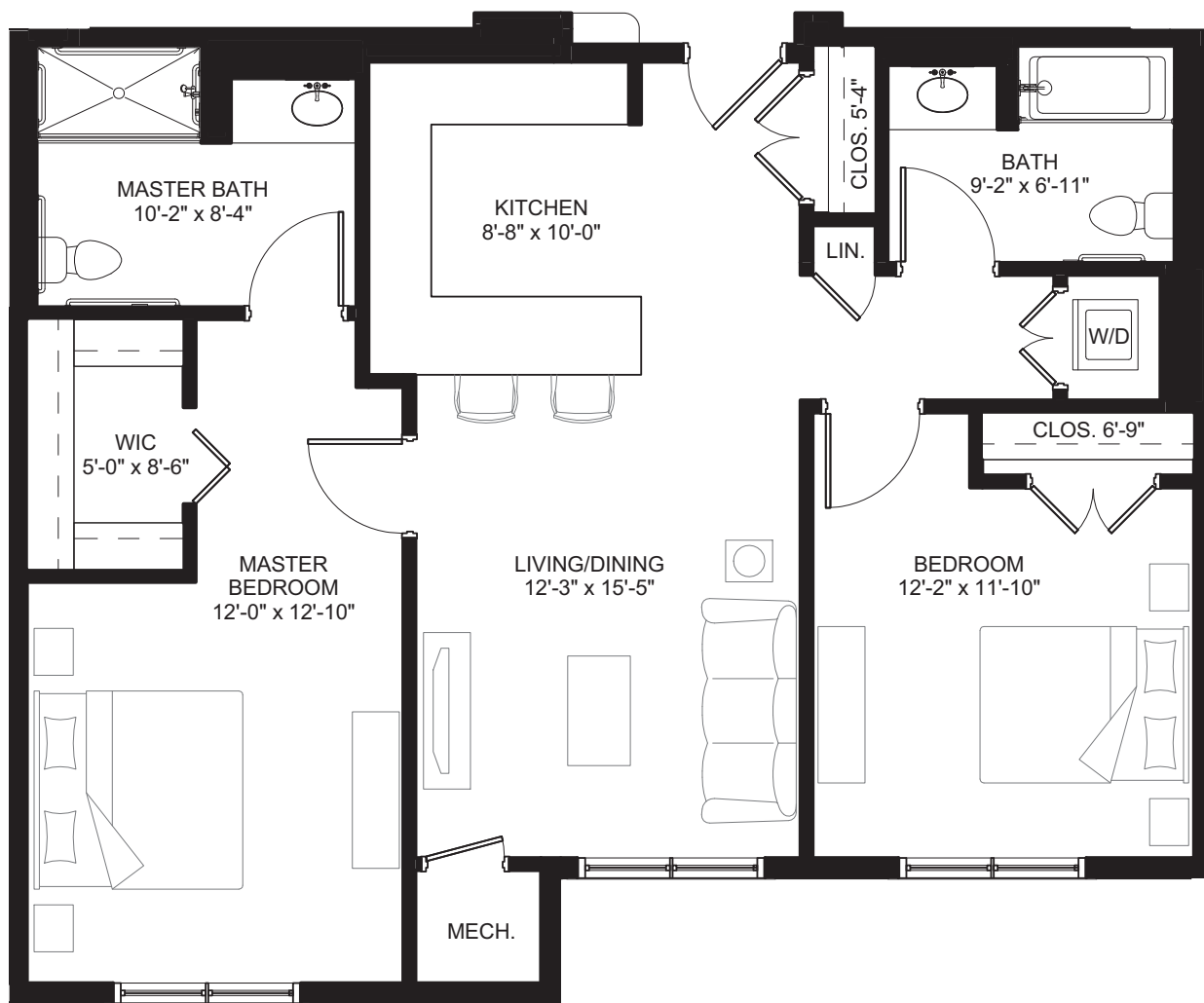


The Parkview

CHERRY — 1,098 sq. ft. • 2 bedrooms, 2 baths



*Subject to change.



Live in spacious comfort
and elegant design,
perfectly styled by you

Information Center • 50 Hauppauge Road • Commack, NY 11725 • FountainGateLI.org

This independent living community will be built after a Certificate of Authority to operate the community has been issued by the Department of Health and the requirements for construction have been met.

The purpose of this marketing material is for FountainGate Gardens to offer prospective residents an opportunity to guarantee a residence in the proposed community by entering a reservation agreement and paying a fully refundable 10% deposit reservation fee. The deposit reservation fee will be deposited into an escrow account and shall be refunded with interest upon request for cancellation. The reservation agreement is not a continuing care contract and may be cancelled at anytime by the prospective resident or their legal representative.

